



Powerful Workstation Management, One Easy-to-Use Console

WinINSTALL Lifecycle Management Suite combines powerful tools that give you the control and flexibility you need to manage your Desktops, Servers, Notebooks—all from one easy-to-use console

KEY BENEFITS

Low infrastructure costs
Most PC lifecycle management suites have intensive hardware requirements that dramatically increase the overall cost of a desktop management solution. The investment required for additional PCs, servers, operating systems, or applications is often discovered late in the planning or evaluation stages—or even worse, after purchase. Thanks to WinINSTALL's tightly integrated design, you can cut your hardware acquisition costs and accelerate your return on investment.

Alternative to Imaging
Synchronizing images with changing hardware configurations, OS versions, applications, patches, users, and locations can quickly put a strain on IT resources. Whether restoring a PC, deploying new hardware, or migrating operating systems, WinINSTALL eliminates the headaches triggered by creating, updating, and tracking images. You won't sacrifice speed and you'll gain the ability to quickly adjust provisioning rules with WinINSTALL's unique PXE Client Reset templates.

Packaging and deployment
Package building with WinINSTALL is presented through an intuitive interface designed for network administrators. With complete support for Microsoft MSI standards, wizard driven package editing, and the award winning WinINSTALL NAI format, IT administrators now have a powerful package editing and deployment system designed as one cohesive unit.

Constant organizational change is placing a tremendous burden on today's IT departments. Trends to decentralize and to globalize are leaving a diverse mix of systems in their wake and creating a wave of new security threats. As costs rise and resources shrink, administrators must somehow manage the fallout while providing measurable business value to their organizations.

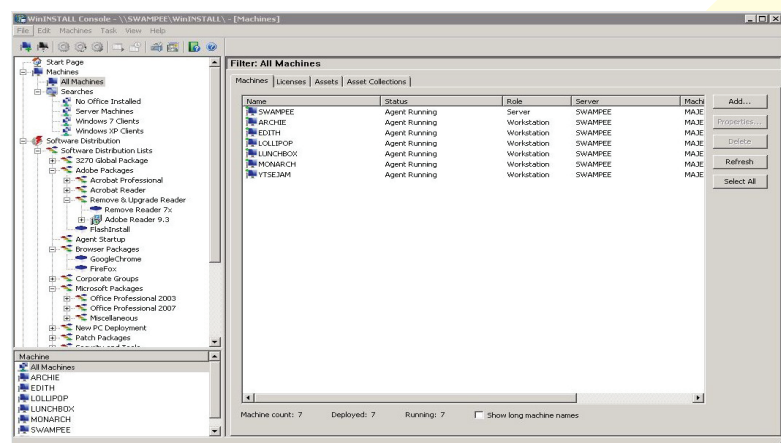
Scalable WinINSTALL Lifecycle Management Suite gives administrators a flexible, comprehensive tool for managing the growing complexity. With this tightly integrated solution, you can deploy, update, track, and support all your PC hardware and software assets—from purchase to retirement. As a result, you can ensure the availability of your business-critical systems and cut your support costs.

Redefining Desktop Management

In one unified solution, WinINSTALL Lifecycle Management Suite finally offers all the functionality administrators need to manage their volatile environments. Here is how WinINSTALL is redefining the desktop, server and notebook management landscape:

Comprehensive, integrated functionality.

Unlike typical point solutions, which can handle just one systems management function at a time, the tightly integrated WinINSTALL suite can tackle a multitude of tasks ranging from software distribution to patch and asset management. With one console, architecture, and database, the suite offers all the benefits of centralized control while also being flexible enough to adapt to decentralized environments.



High desktop availability

WinINSTALL helps ensure that users can access approved software applications, patches, and updates; that system configurations adhere to corporate policies; that the appropriate measures for security management are in place; and that usage complies with license agreements. In short, WinINSTALL minimizes downtime at the desktop, which means more uptime for IT and users.

KEY BENEFITS

Zero-touch deployment

WinINSTALL automates the deployment of operating systems and applications, as well as the configuration and personality restoration of PCs. With multiple deployment options, WinINSTALL offers more flexibility than any other product available today.

Comprehensive security

Protecting client computing resources from internal and external threats requires a concerted effort on multiple fronts. As a single integrated suite, WinINSTALL provides patch management, configuration management, license compliance, asset tracking, and PC decommissioning to ensure compliance with your organization's regulations and policies.

Greater return on existing investments

Flexible by design, WinINSTALL can enhance an existing process or fill a gap that is not being met by your current solution. Either way, WinINSTALL adds value to your current IT investments while increasing desktop availability and enhancing ability to manage the PC lifecycle.

System requirements

Database Platforms:

Microsoft SQL Server 2000 SP4
Microsoft Server 2005
Microsoft SQL Server 2005 Express
Microsoft SQL Express 2005
Oracle 9i
Microsoft SQL Server 2008/R2

WinINSTALL server:

Microsoft Windows XP
Microsoft Windows 2000
Microsoft Windows 2003
Windows Server 2008/R2

WinINSTALL console:

Microsoft Windows XP
Microsoft Windows 2000
Microsoft Windows 2003
Windows Vista/7
Windows Server 2008/R2

WinINSTALL agent:

Microsoft Windows XP
Microsoft Windows 2003 Server
Microsoft Windows 2003 Server R2
Windows Vista/7
Windows Server 2008/R2

Client reset template technology

With WinINSTALL's unique client reset template technology, you can build reusable workflow templates that automate the most labor-intensive desktop management tasks. Applied through a drag-and-drop process, the templates can be used over and over to simplify the following tasks:

PC hardware deployment

Replacing or refreshing PC hardware requires transferring all applications, patches, and data from the old PC to the new PC. It also requires transferring the PC "personality," for example, shortcuts, bookmarks, printer settings, and drive mappings.

Because the new PC might have a different operating system, and will definitely have different hardware, simply imaging the old PC and applying that image to the new one is not a viable option. Furthermore, imaging is risky because "malware" or other vulnerabilities from the old PC can be transferred to the new PC. To avoid this pitfall, many administrators end up applying inefficient manual processes.

WinINSTALL's client reset template technology can streamline the process and eliminate the risk by letting you:

- Boot machines from bare metal status using PXE communications, or pre-load a fleet of new machines from a CSV.
- Automate the install of Windows and Ubuntu OS's via a wizard-driven template.
- Patch the new machines with critical hotfixes and service packs before the user logs-on.
- Join the machine to the domain and pre-install your preferred combination of application packages.
- Configure the look and feel and security preferences for the OS.
- Dynamically restore the PC's personality settings and locally saved data, so users don't lose time finding their files, shortcuts and network resources.
- Turnkey the process of refreshing existing Windows XP machines to Windows 7 and restoring the user profiles without having to author scripts or visit the device.
- For PC retirement, leverage PXE to control the PC and sanitize hard drives to US DoD standards without visiting the device.

With these capabilities, you can replace or refresh hardware without touching the machine

OS migration

Convolved processes with multiple utilities and customized scripts often result in OS migrations that are over budget and behind schedule. Whether you are moving to Windows® 7 today or planning to move to Windows 8™ in the future, WinINSTALL can help.

Unlike most imaging products, WinINSTALL uses client reset template technology to automate the entire OS migration. In other words, there's no need to create, update, or keep track multiple images. The WinINSTALL client reset template can be dragged and dropped onto a machine or scheduled to run on many PCs at specific times.

PC recovery

With WinINSTALL, IT organizations don't spend hours troubleshooting a PC failure, manually installing or

imaging an operating system, and distributing or reinstalling applications. Nor do they need to manually recover all user settings, data, and documents. They can quickly handle major PC failures without ever visiting a desktop.

WinINSTALL provides automated disaster recovery that includes installing a patched operating system, deploying the necessary applications, and restoring the user's configurations. It can even install an operating system on PC hardware that doesn't have an existing operating system.

Unlike imaging, this type of restoration reduces the chance that the same problem will happen again.

MIGRATING TO WINDOWS 7

Whether you are deploying Windows 7 to new or existing PCs, WinINSTALL Lifecycle Management Suite simplifies what is normally a complex, error-prone process.

Here's how it works: WinINSTALL executes a clean, zero-touch install with the latest drivers and patches before the system enters the network. It then brings the PC back to the desired working state with the appropriate applications and PC personality. In other words, it restores all the settings, preferences, and options that are typically configured by users or IT—from configurations for e-mail folders, files, and rules to dial-up networking, mapped drives, short cuts, bookmarks, and printer settings.

Since WinINSTALL automatically backs up and restores a PC's personality, users and IT staff don't spend unproductive hours getting the PC back to the way it was.

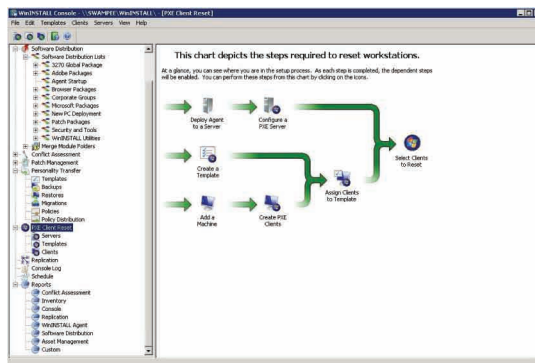
Scalable Software Products

- WinINSTALL MSI Packager Professional
- WinINSTALL Lifecycle Management Suite™
- Scalable Survey™
- Scalable Asset Vision™
- Scalable LIVE!®

ABOUT SCALABLE SOFTWARE

SINCE 1999, OVER 10,000 ORGANIZATIONS WORLDWIDE HAVE USED SCALABLE SOLUTIONS TO MANAGE AND CONTROL EXPENSE ACROSS THEIR IT ESTATES, REPORTING A SUBSTANTIAL RETURN ON INVESTMENT (ROI) AND REDUCTION IN THE TOTAL COST OF OWNERSHIP (TCO). OUR SOLUTIONS HELP IT PROFESSIONALS MANAGE THE ENTIRE LIFE CYCLE OF IT'S ASSETS, FROM THE MOMENT THEY ENTER THE ORGANIZATION UNTIL THEY ARE RETIRED IN A COST-EFFECTIVE MANNER. BY FOCUSING ON THE EXACT IT ASSET NEEDS OF AN ORGANIZATION, WE CAN ENSURE CAPITAL IS OPTIMALLY DEPLOYED, PROFITABILITY IS IMPROVED AND PRODUCTIVITY GREATLY ENHANCED.

FOR MORE INFORMATION, VISIT:
WWW.SCALABLE.COM



WinINSTALL client's reset template technology automates labor-intensive desktop management tasks

Technical Features

DOS-free PXE (Preboot Execution Environment)

Using WinINSTALL's industry-first DOS-free PXE technology, you can remotely boot a PC on the network, even when it does not possess an operating system or DOS boot resources. Although many systems today have preboot capabilities, they require DOS drivers or other capabilities such as WinPE (Windows Preinstallation Environment). The WinINSTALL DOS-free PXE solution uses Windows drivers to quickly detect and boot a machine to the network.

Software packaging

WinINSTALL includes the most popular and comprehensive software packaging solution on the market. The WinINSTALL solution offers a complete set of features for creating Windows Installer (MSI) files from existing software installations and for modifying existing Windows Installer packages using transforms. Unlike other packaging tools, WinINSTALL is ideal for IT administrators and powerful enough for developers.

Bandwidth-optimized desktop management

By using multicast replication, bandwidth throttling, and check-point recovery for mobile or poorly connected clients, WinINSTALL provides a resilient and reliable management infrastructure that adjusts to varying environments or network conditions.

Automated patch management

As the number of worms, viruses, and Trojan horses continues to grow,

organizations are placing greater emphasis on patch management. WinINSTALL eliminates the manual process of data gathering by automatically scanning your desktops, servers and notebooks uncovering vulnerabilities, and providing automated options for scheduled or on-demand remediation. If you would like to slipstream patch content into an OS install media prior to deployment, WinINSTALL can do that too. For remote or poorly connected PCs,

WinINSTALL uses bandwidth throttling to handle patch management.

Award Winning Software Distribution

WinINSTALL distributes software, updates, and patches through various push and pull methods: drag and drop, inventory based groups or filters, scheduled multi-phase installs, interactive, program launcher, Intranet installer, e-mail and portable media. Bandwidth controls and checkpoint restart are also an important capability making WinINSTALL a highly robust and cost effective package deployment solution.

Centralized reporting

WinINSTALL can generate comprehensive reports based on the following criteria:

- Software license compliance
- Conflict assessments
- Asset management (hardware inventory, application inventory, change reports, and file inventory)
- Hardware and application changes
- Package replication history
- Failures
- Users and groups
- Version updates

You can use these reports right out of the box, customize them to reflect your specific needs, or design new reports—all from within the WinINSTALL console.